

# Predicted High Park Fire Flood Response: Rist Canyon



USDA Natural Resources Conservation Service

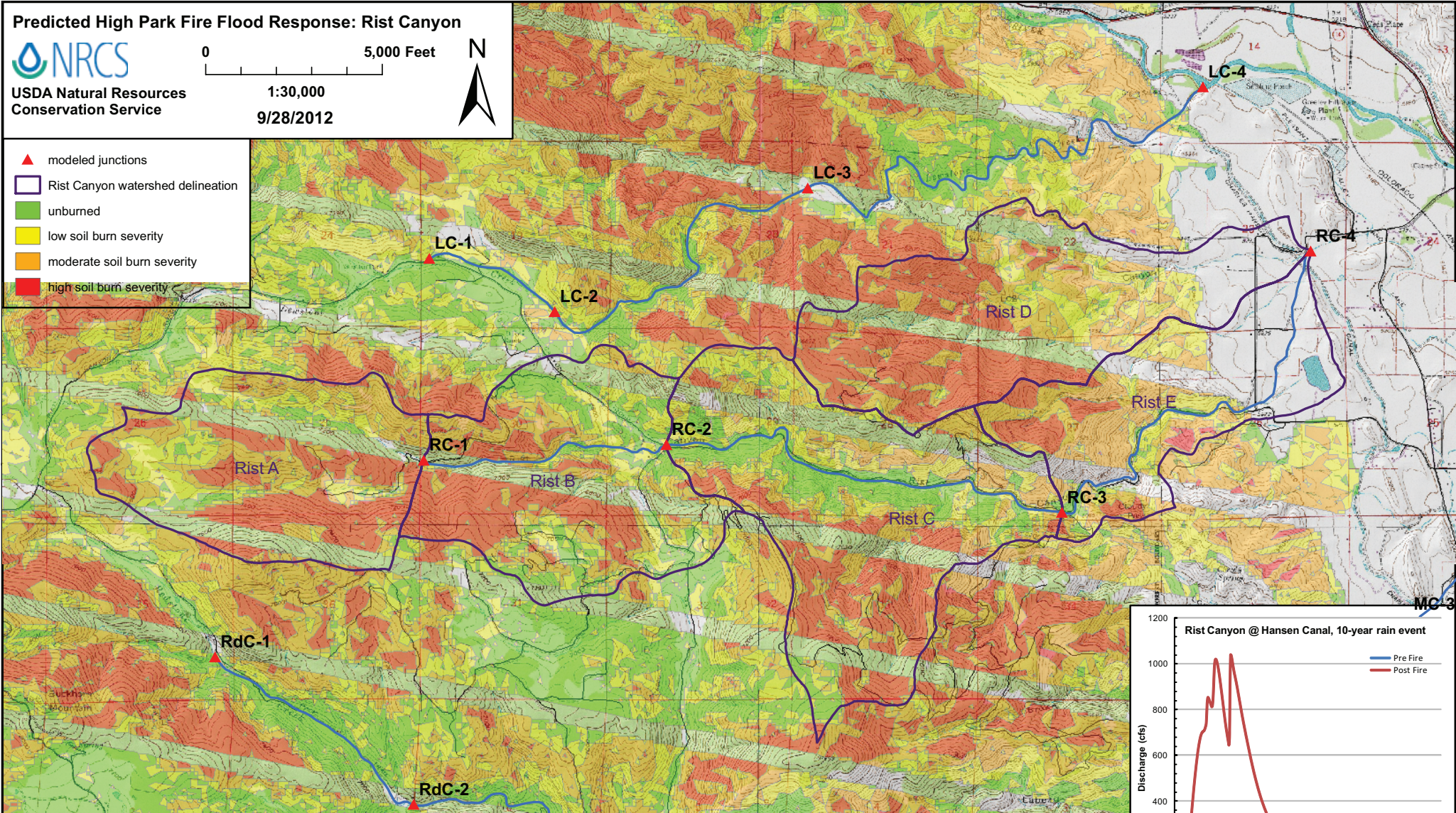
0 5,000 Feet

1:30,000

9/28/2012



- ▲ modeled junctions
- Rist Canyon watershed delineation
- unburned
- low soil burn severity
- moderate soil burn severity
- high soil burn severity



Junction or Catchment	Drainage Area (mi <sup>2</sup> )	2-Year Rain Event (0.8 inches)				10-Year Rain Event (1.5 inches)				25-Year Rain Event (1.8 inches)				50-Year Rain Event (2.2 inches)				100-Year Rain Event (2.4 inches)			
		Predicted Flow (cfs) Pre Fire	Post/Pre	Peak Flow	Sed. Bulking Flow (cfs)	Predicted Flow (cfs) Pre Fire	Post/Pre	Peak Flow	Sed. Bulking Flow (cfs)	Predicted Flow (cfs) Pre Fire	Post/Pre	Peak Flow	Sed. Bulking Flow (cfs)	Predicted Flow (cfs) Pre Fire	Post/Pre	Peak Flow	Sed. Bulking Flow (cfs)	Predicted Flow (cfs) Pre Fire	Post/Pre	Peak Flow	Sed. Bulking Flow (cfs)
RC-1	1.44	0	49	n/a	61	75	330	4.3	410	150	490	3.4	620	270	760	2.8	950	340	900	2.7	1100
RC-2	3.00	1.3	98	81	120	170	630	3.6	780	330	970	2.9	1200	580	1500	2.6	1900	730	1800	2.4	2200
RC-3	5.14	1.5	110	72	140	190	860	4.7	1100	390	1400	3.5	1700	810	2200	2.7	2800	1100	2600	2.5	3300
Rist D	1.77	4.1	110	27	140	150	520	3.6	650	250	750	3.0	930	420	1100	2.6	1400	520	1300	2.4	1600
RC-4	8.16	4.1	130	37	160	280	1000	3.7	1300	550	1700	3.1	2100	1100	2900	2.8	3700	1500	3600	2.5	4500

