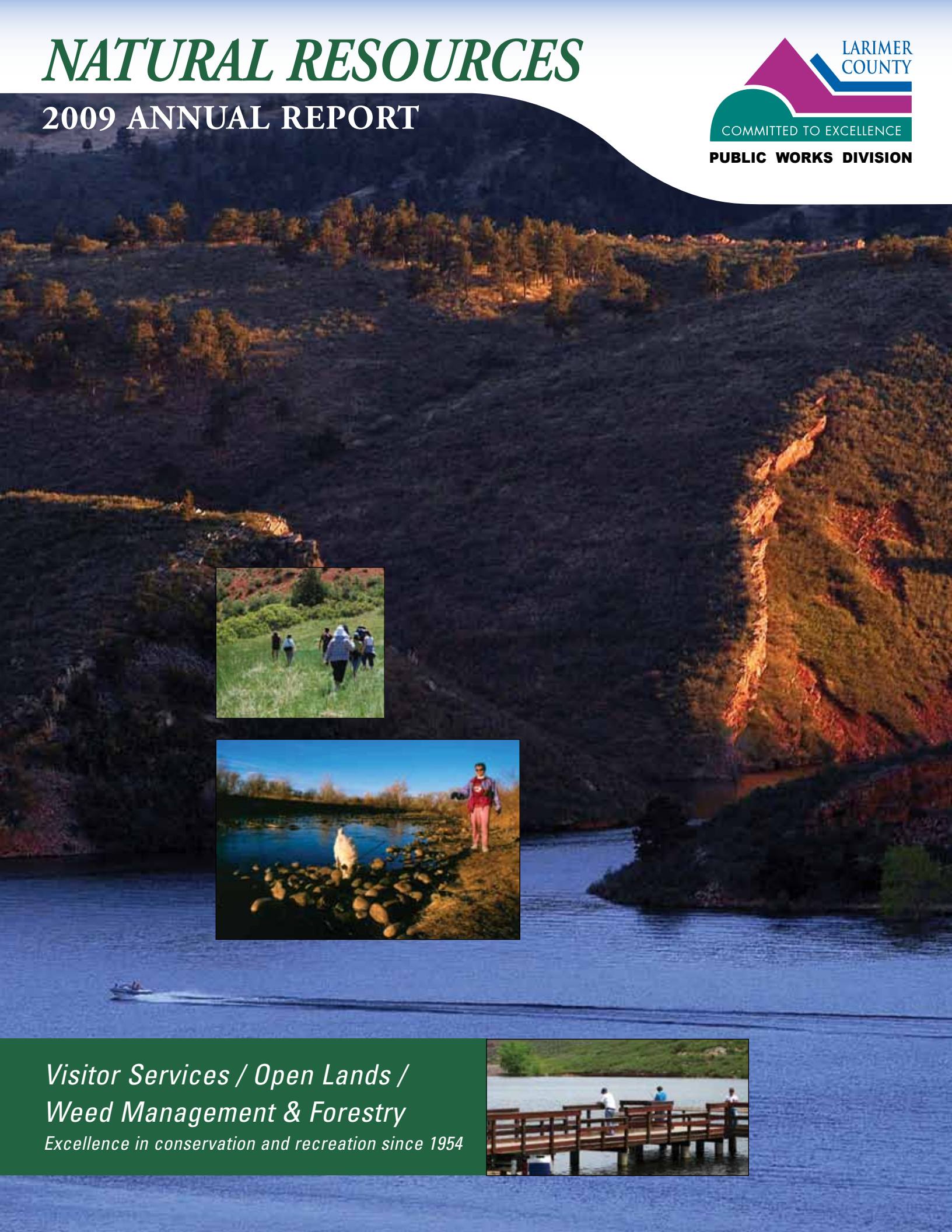


NATURAL RESOURCES

2009 ANNUAL REPORT



*Visitor Services / Open Lands /
Weed Management & Forestry
Excellence in conservation and recreation since 1954*



A message from the Director
Take It Outdoors!

Dear Larimer County Citizens,

I trust that all of you took the opportunity this year to connect to the many parks and open spaces the County provides for your enjoyment. Whether it was taking a hike up to the ever-popular Horsetooth Mountain Open Space or sailing the abundant waters of Carter Lake, you made that connection to the great outdoors.

We discovered this year, even during these difficult economic times, visitors stayed closer to home and recreated in our parks and open spaces more than ever before. Getting outdoors remains

a high priority to you and your family here in Northern Colorado.

In 2010 we will continue providing new and improved recreation opportunities. Discover the new, exciting trails awaiting you at Red Mountain Open Space; and, for you sun worshippers check out the new swim beach at Horsetooth Reservoir County Park.

I especially want to thank the staff of the Department of Natural Resources for their dedication in serving you with safe and enjoyable recreation, and our Board of County Commissioners for their support of our programs.

Remember to "Take It Outdoors" in 2010.



Gary K. Buffington
 Director, Dept. of Natural Resources

Larimer County government officials

2009 Board of County Commissioners:
 Kathay Rennels, Steve Johnson, Tom Donnelly
 2010 Board of County Commissioners:
 Tom Donnelly, Steve Johnson, Lew Gaiter III
 County Manager: Frank Lancaster
 Public Works Director: Marc Engemoen



Photo: John Scales

A Special Thanks to our Citizen Advisory Board Members



Photo: Charlie Johnson



Photo: Charlie Johnson



Photo: Tim D'Amato

Parks Advisory Board

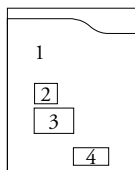
Front row, left to right: Forrest Orswell, *Gary Buffington, *Mark Caughlan, Chad LaChance, Frank Gillespie. Back row, left to right: County Commissioner Steve Johnson, Mark DeGregorio, Vice Chair Barry Lewis, Chair, David Coulson, Linda Knowlton, Frank Cada, Vickie Traxler, *Debra Wykoff. Not in photo: Russell Fruits, Tom Miller, *Chris Fleming, *Dan Rieves
 * = Staff

Open Lands Advisory Board

Front row, left to right: Nancy Wallace, *Kerri Rollins, *Zac Wiebe, *Charlie Johnson. 2nd row, left to right: *Jerry White, David Roy, Steve Vessey, Bill Newman, Brian Hayes, *Rob Novak, *Travis Rollins. Back row, left to right: *Lori Smith, *Sue Burke, Peter Kast, Patricia Brennan, John Ericson, Don Griffith, *Gary Buffington, Ted Swanson, *Meegan Flenniken, County Commissioner Tom Donnelly. Not in photo: Trudi Haines, Jeff Hindman
 * = Staff

Weed Advisory Board

Left to right: Bob Zimdahl, Ken Mathias, Ernie Marx, Matt Parker, Chuck Miller. Not in photo: Duane Pond



- Cover:
 1. Horsetooth Reservoir, Jim Disney
 2. Red Mountain Open Space, Charlie Johnson
 3. Lions' Open Space, Rick Price
 4. Flatiron Reservoir, Sue Burke

“Larimer County manages an incredible variety of public lands, from mountains to prairies, for their use, enjoyment, and protection on behalf of all of us whose sales taxes make them possible. As a proud citizen who has served on both the Open Lands and the Parks Advisory Boards, I’m certain in 50 years our grandchildren will look kindly on us for doing this for them.”

Mark DeGregorio, Parks Advisory Board Member, past Open Lands Advisory Board Member

Red Mountain Open Space—Opened to the Public June, 2009!



Red Mountain Open Space celebrated its grand opening with Soapstone Prairie Natural Area on June 7, 2009! The skies were tumultuous and the public ecstatic to explore newly built trails that lead hikers, bikers, and equestrians through this beautiful landscape. Photo: Charlie Johnson



*Larimer County Trails and Projects Crew.
Photo: Elijah Miller*

“What I am most proud of is that I’m working with a team that is preserving the natural history and cultural history of northern Colorado, for my children and future generations.”

John Bender, Trail Crew Worker



*Constructing the Bent Rock Trail, Larimer County Trails and Projects Crew.
Photo: Elijah Miller*

Connecting People to the Land and Its Resources

We heard it first with Richard Louv's book *Last Child in the Woods*—connecting kids to the land is critical for their mental and physical well being. Perhaps that was the first aha! moment: we're not just a land conservation and recreation agency, we are also about people and how they relate to the land and its resources. We've heard it again at conferences and from national conservation organizations. In 2009 we re-examined how we do our work, why we do our work, and for whom, resulting in more questions, out-of-the-box ideas, and new, uncharted waters.



Silver Leaf Nature Path—a small-grant awarded project. Photo: Jenna Swindell

Our efforts to connect people to the land and its resources through better customer service and communication, as well as actively reaching out to those we have not previously engaged, will be in small steps. These efforts will result in forging new community partnerships, providing new land use opportunities, and overall being more inclusive of all County residents. It will be incremental in coming, but it will come.



Crescent Lake cleanup—a small-grant awarded project. Photo: Patty Rolfe

“The nature path and the outdoor classroom are now truly ready for nature to take over their care. People and animals are using the area and our volunteer-led construction project is holding up. You gave us the opportunity as residents to direct our own improvement of our outdoor living spaces and that is valuable.”

Jenna Swindell and the Silver Leaf Beautification Committee

Small Grants for Community Partnering

These grants allow Larimer County citizens to apply directly for Open Spaces Sales Tax dollars for their community projects.

- **In 2009, ten local projects received \$11,525** an educational natural area at an elementary school, maintaining a neighborhood lake, building a handicap accessible nature trail, tools and supplies for volunteer trail crews, xeriscaping and reclamation projects, native plantings



Silver Leaf Nature Path. Photo: Jenna Swindell

- **Grant categories** to provide or enhance natural areas, provide linkages with existing open lands, or provide opportunities for environmental education, outdoor recreation or nature interpretation



Peninsula at Horseshoe Lake Native Plant Woodland Cluster—a small-grant awarded project. Photo: Marge Black

With the goal of connecting more people and communities to the land, future grant categories were expanded to include:

- Agriculture
- Increased access to open lands
- Research on open spaces

www.larimer.org/naturalresources/smallgrants.htm

Cleaning Up our Act in the Parks, and Yours, Too!

All of our surveys and research pointed to one key element: clean campers are happy campers. As projects from the 2007 Master Plan were prioritized, our visitors made it clear shower buildings were high on their lists. As the department's first shower facilities went into use this summer, visitors to Horsetooth confirmed their assertions by making great use of these buildings. These custom built structures are an attractive example of form meeting function.

Boaters agreed that cleanliness and happiness are closely related. Statewide Aquatic Nuisance Species regulations came to Horsetooth and Carter this year, requiring a physical inspection of every vessel entering the water. This massive undertaking made both county staff and our boating visitors appreciate the importance and convenience of a Cleaned—Drained—and Dry boat. Savvy boaters had the inspections stations moving quickly, and dedicated inspectors made a real impact on the protection of waterways while making the process as hassle free as possible.



Looking for aquatic nuisance species Photo: Mike Rossi



Visitor services building at Horsetooth Reservoir Photo: Paul Treakle



ADA upgrades on the east side of Horsetooth Reservoir Photo: Steve McCorkel

We finished cleaning up *our* act as well, more specifically regarding the Americans with Disabilities Act. Through a partnership with the Bureau of Reclamation the Department of Natural Resources completed retrofits identified in an accessibility evaluation. Construction crews kept busy putting these great projects on the ground. The pride in their work really shows.

Despite our new emphasis on hygiene, the most powerful reflection of 2009 was perhaps in the view found looking across the reservoirs this summer. Rains kept water levels higher than we had seen in recent memory. Near-full reservoirs and a brilliantly green spring rewarded long-standing visitors and welcomed new visitors to these great Larimer County resources.

As we look forward to 2010 we extend our commitment to providing great places to play. Visitors to Horsetooth will see an update to the swim beach facilities in South Bay. With the potential construction of another shower facility we hope to have some clean and happy campers at Carter Lake as well. Projections for good water levels in 2010 should keep you out of the mud, but if they don't, grab your rubber ducky or your loofah and come check us out anyway!



High water at Carter Lake Photo: Sue Burke

Playing with the kids, learning something new, or just kicking back in your Parks and Open Spaces!



Carter Lake County Park
Southwest of Loveland Photo: Walt Hubis



Fossil Creek Reservoir Regional Open Space
South Fort Collins Photo: Gregory Mayse



Pinewood Reservoir County Park
Southwest of Loveland Photo: Efrain Padro



Devil's Backbone Open Space and Rimrock Open Space
West of Loveland Photo: Kelley Savage



Flatiron Reservoir
Southwest of Loveland Photo: Sue Burke



Pleasant Valley Trail and Lions' Open Space
In Laporte Photo: Ernst Strenge



Eagle's Nest Open Space
South of Livermore Photo: Rick Price



Hermit Park Open Space
East of Estes Park Photo: 3 Old Goats



Ramsay-Shockey Open Space
Next to Pinewood Reservoir Photo: Charlie Johnson



Estes Park Campgrounds at Mary's Lake and East Portal Reservoir
Outside of Estes Park Photo: Sue Burke



Horsetooth Mountain Open Space
West of Loveland Photo: Rick Price



Red Mountain Open Space
Northern Larimer County Photo: Richard Snell



Horsetooth Reservoir County Park
West of Fort Collins Photo: Staff

Monthly events calendar:
www.larimer.org/naturalresources/parks_calendar.cfm

Subscribe to the monthly events flyer at
www.larimer.org/subscriptions.cfm.
Select *Natural Resources Monthly Flyer*.

Volunteers Cast a Long Shadow!

The Department of Natural Resources fosters volunteerism and recognizes volunteers as essential to building healthy and quality outdoor education, recreation, and conservation opportunities.

The Volunteer Program supports the department's mission through efficient, effective, and appropriate use of its volunteers. Goals are designed for growth, organization, and efficiency, and for making the "volunteer experience" something special.

To be dynamic, a continuous cycle of planning, implementation, assessment, and refinement allows for steady improvements, and insures the program adjusts to changing environments. Volunteers are integral to assessing our future direction.

Volunteers donated over 50,000 hours in 2009 equaling \$1,085,930.70* or over 20 full-time employees. What an incredible effort and what an incredible impact!

If you are interested in volunteering, please contact CJ Cullins, 970-679-4552, ccullins@larimer.org, or www.larimer.org/nrvolunteer.



A volunteer helping out at the annual Birding Fair Photo: CJ Cullins

* http://www.independentsector.org/programs/research/volunteer_time.html

Recreation at a Glance	County Parks and Open Spaces														
	Carter Lake County Park	Devil's Backbone Open Space	Eagle's Nest Open Space	Estes Park Campground at Mary's Lake	Estes Park Campground at East Portal	Flatiron Reservoir County Park	Fossil Creek Reservoir Regional Open Space	Glade Park County Park	Hermit Park Open Space	Horsetooth Mountain Open Space	Horsetooth Reservoir County Park	Pinewood Reservoir County Park	Pleasant Valley Trail at Lions' Open Space	Ramsay-Shockey Open Space	Red Mountain Open Space
Acres	2,100	2,670	755	50	75	247	843	3	1,362	2,711	3,900	427	20	177	14,980
Entrance Permit Required	●			●	●	●			●	●	●	●		●	
Camping with Permit	●A			●	●	●A			●A		●A	●A			
Camper Cabins						●A			●A		●A				
Camping/ Cabin Reservations	●			●	●	●			●		●	●			
Electrical Hookups	●			●	●	●					●				
Full Hookups				●	●						●				
Sanitary Dump Station	●			●	●				●		●				
Back Country Camping										●	●				
Miles of Trail	4	19.5	5				2A		5.5	29	1		2A	4A	8
Hiking	●	●	●				●		●	●	●		●	●	●
Horseback Riding	●	●	●						●	●				●	●
Mountain Biking	●	●							●	●	●	●	●	●	●
Leashed Dogs Allowed	●	●*	●	●	●	●		●	●	●	●	●	●		
Boating	●										●	●			
Boat Ramp	●										●	●			
Marina	●										●				
Fishing	●		●			●A		●			●	●	●		
Swimming Beach	●										●				
Picnic Tables	●A	●				●A	●A	●A	●A	●A	●A	●A	●A	●A	●A
Drinking Fountains	●	●		●	●	●	●			●	●	●	●	●	●
Restrooms	●A	●A	●A	●A	●A	●A	●A	●A	●A	●A	●A	●A	●A	●A	●A
Guided Nature Hikes		●	●						●	●				●	●
Summer Campground Programs	●					●			●		●				

A – Meets Americans with Disabilities Act guidelines

* Dogs not allowed on Rimrock Trail

“Now that we have acquired these lands, the challenge to us from the people of Larimer County is to effectively manage, protect, and steward them.”

Sue Sparling, Open Lands Advisory Board Member 2003-2009



Horsetooth Mountain Open Space. Photo: Gregory Mayse

“I’m sure you hear this every now and then, but all of your properties/resources are an incredible asset to the community and provide innumerable positive experiences and learning opportunities for residents of all ages.”

Martina Wilkinson, Open Space Visitor



Carter Lake. Photo: Walt Hubis



Red Mountain Open Space. Photo: Gregory Mayse

“I wish I was a person who could come up with the right words to explain what we felt about your two new open spaces, Red Mountain and Soapstone. Perfect comes to mind. You guys did an amazing job of making these two places into one of the most equine friendly areas to ride... I have told all my members to put these trails on their must ride lists... you did a wonderful job and we will enjoy it for years to come.”

Vickie Buchanan, President, Northern Colorado Back Country Horsemen



Red Mountain Open Space. Photo: Charlie Johnson



Hermit Park Open Space. Photo: Nikki Whitney



Horsetooth Mountain Open Space. Photo: Martina Wilkinson



Hermit Park Open Space. Photo: Chris Fleming

“We love reading books about wildlife... but up close we saw: a falcon, birds’ nests, caterpillars, spiders, rabbits, all kinds of plants, and a snakeskin.”

Dunn Elementary 2nd Grader

“Going to Hermit Park was always one of the highlights of our year.”

*Lew Gaiter III,
County Commissioner District 1*

“It was good to go on a hike; we felt healthy walking for a couple of miles.”

Walt Clark Elementary 6th Grader



Devil’s Backbone Open Space. Photo: Walt Hubis



Carter Lake. Photo: Unknown

Of Mice and Water Trucks

Planning, Development and Resource Management Program Activities

Recreation and wildlife habitat protection go hand in hand

This water truck was used to maintain newly planted shrubs along the Pleasant Valley Trail, near Laporte. The shrubs help improve habitat along this trail corridor, and may help in the bigger picture of protecting the Preble's meadow jumping mouse.



Photo: Jeffrey Boring



Photo: Jeffrey Boring

Counting the years at River Bluffs Open Space

Research is integral to sound natural resource management at the Department of Natural Resources. This archaeologist was hired to study the prehistoric uses of a bluff area on River Bluffs Open Space. Results showed prior occupation by Native Americans during the Early Ceramic Period, about 1,800-800 years before present.

How do you measure the environmental health of an open space?

In 2009, Natural Resources staff adopted a new scientific approach to study the ecological integrity of each Larimer County open space. Staff assisted by volunteers (shown below at Red Mountain Open Space) measured plant species diversity for an ecological report card. This approach, to be employed every three to five years, helps us make adaptive management decisions.

What happened with those weeds in 2009?

- The Larimer County Weed District received grant funding from The Interstate Pest Control Compact and Colorado Department of Agriculture for a 3-year program on education and management of 'List A' weed species.
- County weed management staff are collaborating with Dr. Andrew Norton, the insect bio-control professor at Colorado State University, on a weed management project at Red Mountain Open Space. The project establishes a viable population of weevils that feed exclusively on dalmatian toadflax, a noxious weed species, then monitors impact over time.
- The CSU weed science program and Larimer County Weed District are working closely on weed management and native plant restoration field studies. Each site is in an area of a specific weed species problem with numerous plots typically spread over 1-2 acres. The field studies will be demonstration sites for outreach and education tours and data collection showing best management practices.
- The Weed Management Program revised and updated its website www.larimer.org/weeds to include many new photos, management guidelines, and information on weed management and range and pasture restoration.



Photo: Dave Lentz

Sorting that woody biomass

Larimer County Forestry Program partnered with Peak to Peak Wood (www.peaktopeakwood.org), operating two woody biomass sort yards, one in Stove Prairie and one in the Red Feather Lakes area. Above, local residents disposed of logs from their properties from forest thinning projects, fire mitigation efforts, and mountain pine beetle removals. The logs were then processed into product at a mill. These yards will be open to the public again in 2010.



Photo: Justin Scharron

REPORT CARD TO THE CITIZENS

2009 Improvements

Red Mountain Open Space

Development of the trailhead and trail system at Red Mountain Open Space including picnic shelters, an outdoor classroom, kiosk, and livestock water access. Road access was completed and the area opened to the public.

2009 Project Cost: \$1,136,700

Partners:

Great Outdoors Colorado: \$340,000

Roundup Riders of the Rockies: \$12,500

Larimer County Horseman's Association: \$500

Larimer County Engineering Dept.

Larimer County Open Lands: \$783,700

Hermit Park Open Space

Improvements to Bobcat Campground including improved campsites, addition of camphost sites, and new vault toilets.

2009 Project Cost: \$250,000

Partners:

Gates Family Foundation: \$100,000

Great Outdoors Colorado: \$100,000

Larimer County Engineering Dept.

Larimer County Open Lands: \$50,000

Horsetooth Reservoir

Improvement projects (Phase I) including construction of camper services buildings in South Bay Campground and Inlet Bay Campground, and the addition of 8 full hookups and 4 electric campsites in South Bay Campground.

2009 Project Cost: \$983,700

Partners: Bureau of Reclamation: \$466,400

Great Outdoors Colorado: \$315,000

Larimer County Engineering Dept.

***Larimer County Dept. of Natural Resources:
\$202,300***



Hermit Park Open Space Photo: Jim Disney



Horsetooth Reservoir Photo: Jeff Andersen



Red Mountain Open Space Photo: Jack Hicks

Open Space Tax Revenues Benefit All of Larimer County

The 1/4-cent *Help Preserve Open Spaces* (HPOS) sales and use tax revenue is shared with the County's eight municipalities. The tax continues through 2018, and is not imposed on food or prescription drugs. The total revenue collected to date is over \$114 million.

Distributions to municipalities are based upon the highest yield of either population or sales tax generation. This revenue sharing agreement ensures that residents throughout the county receive benefits from the Open Space sales tax.

Annual Revenue Receipt of Open Space Tax Dollars*

	Larimer CO	Berthoud	Estes Park	Fort Collins	Johnstown	Loveland	Timnath	Wellington	Windsor
1996	2,259,975	71,154	161,905	2,107,473	–	847,210	4,221	29,848	–
1997	2,485,421	80,969	178,198	2,319,562	–	932,139	4,646	32,520	–
1998	2,707,553	87,574	193,453	2,487,606	–	1,003,872	5,025	40,557	–
1999	3,067,810	101,539	224,779	2,850,066	–	1,146,823	5,732	47,494	–
2000	3,294,869	110,862	222,608	3,109,001	–	1,234,060	5,742	53,444	–
2001	3,565,146	122,889	229,886	3,323,372	–	1,321,205	5,887	64,589	–
2002	3,527,084	124,139	218,802	3,235,748	–	1,304,378	5,599	67,642	–
2003	3,532,580	123,913	218,445	3,205,119	–	1,314,655	7,083	66,730	–
2004	3,750,211	126,810	234,908	3,374,671	9,457	1,405,098	11,480	75,185	17,416
2005	3,811,306	127,480	239,502	3,417,517	8,932	1,432,898	11,684	79,698	20,115
2006	4,033,795	136,930	250,110	3,599,786	11,965	1,506,477	13,196	77,782	13,379
2007	4,152,187	129,513	252,524	3,529,570	34,285	1,554,153	10,563	122,196	54,760
2008	3,956,426	120,359	240,167	3,189,107	38,772	1,470,884	9,121	122,125	55,744
2009	3,614,183	109,178	224,318	2,824,574	45,847	1,410,859	7,103	114,630	49,847
Total	47,758,547	1,573,310	3,089,604	42,573,171	149,258	17,884,710	107,083	994,440	211,260

* These figures are unaudited. Audit to be completed in mid 2010. Figures in this chart have been rounded when appropriate.

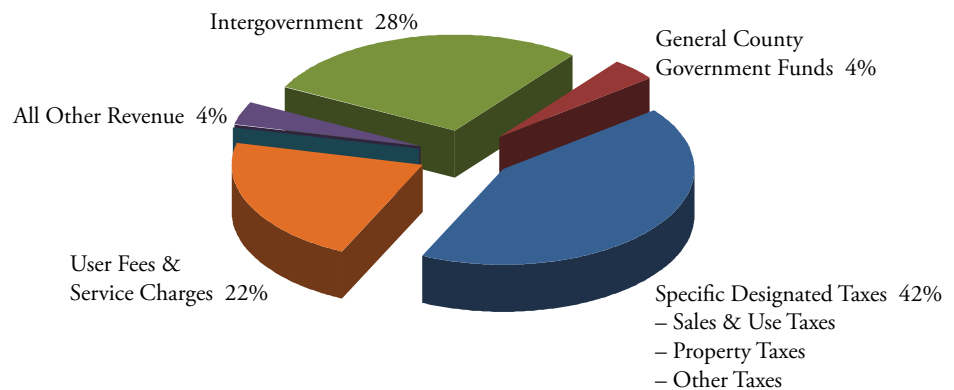
Summary of Finances

The Larimer County Department of Natural Resources includes the Parks Program, the Open Lands Program and the Weed & Forestry Program.

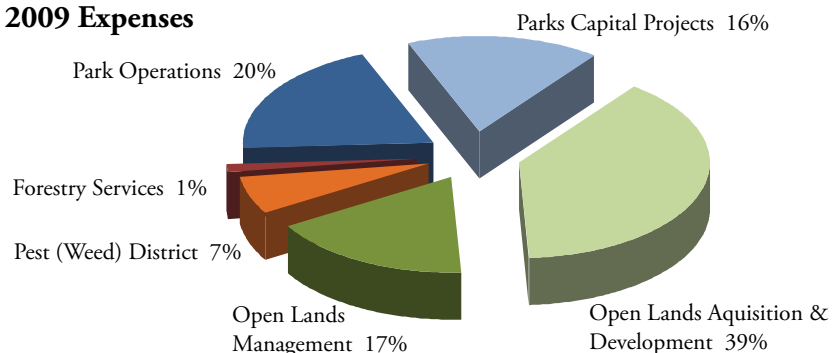
Revenues are realized from a number of sources and totaled 9.7 million in 2009. Expenses for 2009 were 9.2 million including a number of one-time capital development projects for both Parks and Open Lands.

Major capital projects in 2009 included development at Hermit Park, acquisition of conservation easements in the Buckeye area and construction of part of the new Poudre River Trail. Work has also continued for developments at Red Mountain Open Space, the Horsetooth South Bay Campground, Shower Facility and Swim Beach Improvement, and Inlet Bay Camper Services Building. Additional work is being done relating to ADA compliance and retrofits at all reservoirs.

2009 Revenues



2009 Expenses



* These figures are unaudited. Audit to be completed in mid 2010.

“Larimer County contains some of the most beautiful and unspoiled natural areas in the state of Colorado. Our desire is to preserve these areas for the enjoyment of future generations and to make them accessible for the enjoyment of all current county residents.”

Steve Johnson,
County Commissioner District 2



Eagle's Nest Open Space. Photo: Rick Price

Giving More Than G 100%

Conservation and recreation continue to be top priorities for county citizens, even in these tough economic times. Several made either land or cash donations that benefit everyone in Larimer County.

Land donations provide scenic viewsheds, wildlife habitat, and preservation of our working farms and ranches. Cash donations provide for trailhead amenities, such as water, that many can benefit from directly.

Amazingly, donations, partnerships and grants have leveraged \$1.13 for every open space sales tax dollar received since 1996—a great return on investment for Larimer County citizens!

Major Donors of the Open Lands Program

Donation over \$1,000,000	Agilent Technologies (2007) David & Susan Jessup (1999-2005) Rob Cohen (2005)	Hermit Park Open Space Sylvan Dale Ranch CEs Cohen CE
\$500,000 to \$999,000	H.A. & Elaine Fonken (2002-2006) Jake Kauffman & Son, Inc. (2001) Paul Jonjak & Family (1999)	Fonken CE I-V Kauffman CE Blue Mountain Bison Ranch CE
\$300,000 to \$499,000	Curt & Jennifer Heckrodt (2000) Jack & Beth White (2000) Bob Ramsay (1999)	Red-tail Ridge Open Space Rimrock Open Space Ramsay-Shockey Open Space
\$100,000 to \$299,000	Jim & Beth Crowder (2009) Jim & Christy Bradley (2006, 2009) Eldon & Trulie Ackerman (2004-2005) Catherine Roberts (2004) Royce Hopkins (2004) The American Legion (2004) Dan Miller & Mary Beth Simon (2002-2003) Larry & Anne Peterson (2002) Patricia Block (2002) Dave Sitzman (2001) Grace Dunkin (2001) Joe & Pat Harper (2000) Jon & Susanne Stephens (2000)	Russ Crowder Area at Devil's Backbone Open Space Bradley CE I, II Ackerman CE I, II Roberts CE Hopkins CE American Legion Open Space Miller-Simon CE I, II Peterson CE Block CE Kerbel Farm CE Ryan Gulch CE II Harper CE Ryan Gulch CE
\$5,000 to \$99,000	Roundup Riders of the Rockies, Inc. (2009) Miller-Simon-Bokovoy (2009) Advanced Micro Devices (2007) Anonymous Donor* (2007) Community Foundation of No. Colo.* (2007) Erion Foundation* (2007) Hewlett-Packard Corporation (2007) Mark D. Tabb & Julie Vida* (2007) McWhinney Foundation (2007) Microsoft Corporation* (2007) Haines & Colton Charitable Trust* (2007) Verigy Corporation (2007) Whole Foods Markets* (2007) Bryant & Patricia Miller (2006) Charles & Judith Siefke (2005) Southdown, Inc (2001) Miller, Left Hand, & Park Creek Ranches (2001) Robert & Ann Avis (2000) Byron & Beverly Williams (1999) Audra & Don Hughey (1998) Stephanie Steppel-White (1997)	Red Mountain Open Space Miller-Simon-Bokovoy CE Hermit Park Open Space Hermit Park Open Space Hermit Park Open Space Hermit Park Open Space Hermit Park Open Space Hermit Park Open Space Hermit Park Open Space Hermit Park Open Space Hermit Park Open Space Hermit Park Open Space Hermit Park Open Space Hermit Park Open Space Hermit Park Open Space Hermit Park Open Space Hermit Park Open Space Hermit Park Open Space Hermit Park Open Space Hermit Park Open Space Hermit Park Open Space Miller CE Siefke CE Red-tail Ridge Open Space Buckeye Agricultural Partnership CE Eagle's Nest CE Fossil Creek Reservoir Open Space Horsetooth Mountain Open Space Coyote Ridge Natural Area

Bold 2009 Donations

CE Conservation Easement

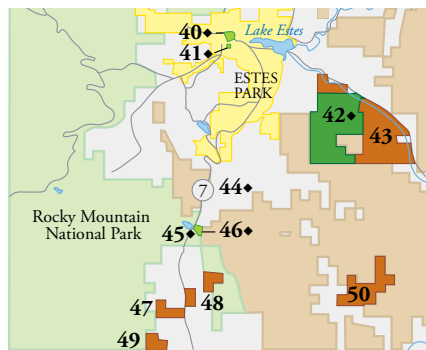
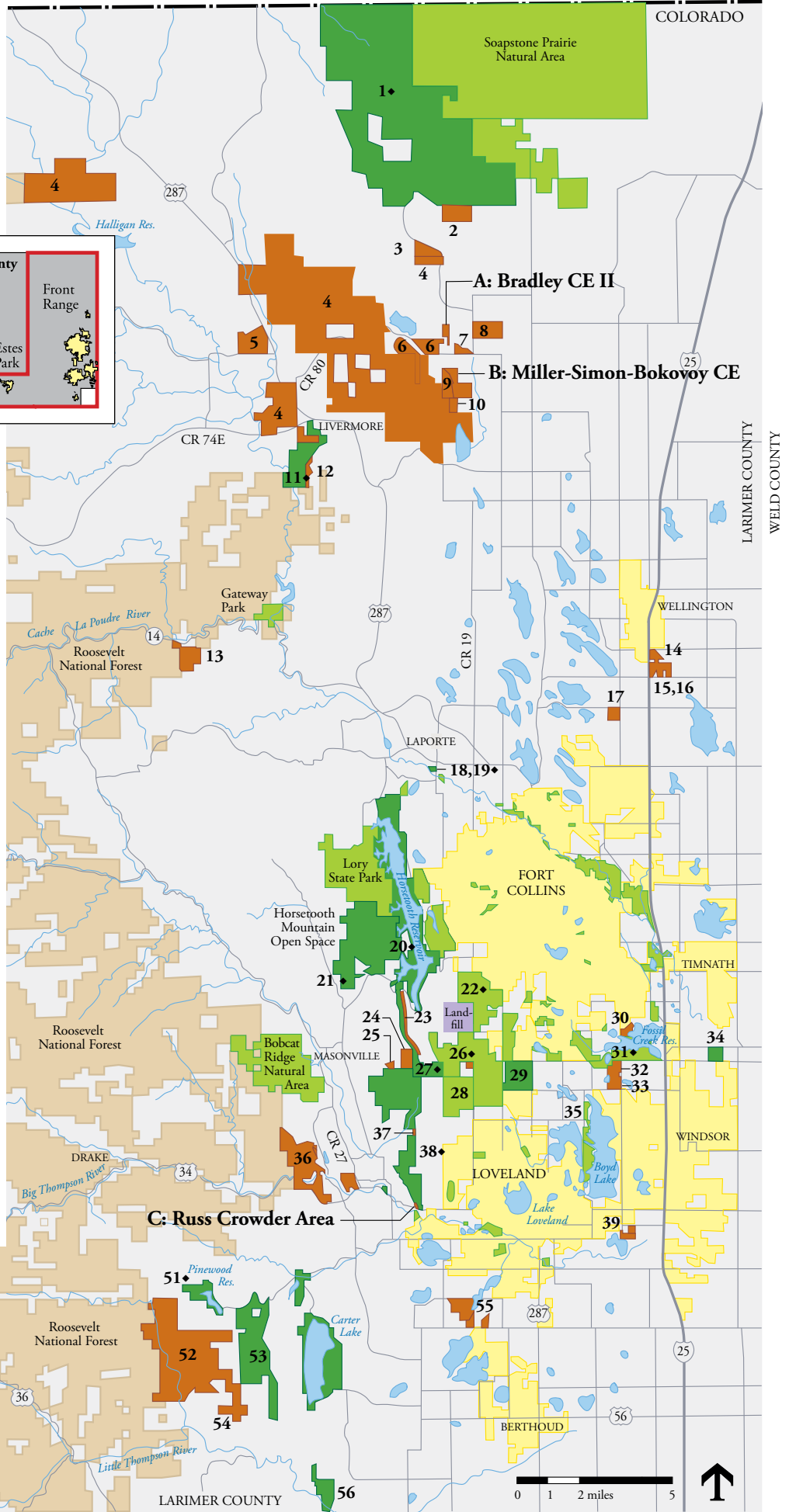
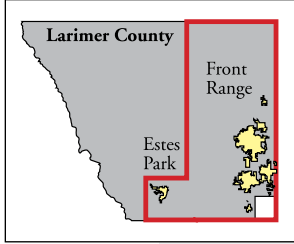
* Donation to Friends of Larimer County Parks and Open Lands towards a specific project

Acquisitions & Partnerships 1996-2009

WYOMING
COLORADO

- A Bradley CE II — 2009**
- B Miller-Simon-Bokovoy CE — 2009**
- C Russ Crowder Area — 2009**
- 1 Red Mountain Open Space
- 2 Ackerman II CE
- 3 Ackerman CE
- 4 Roberts Ranch CE
- 5 Teepee Rings CE
- 6 Buckeye Agricultural Partnership CEs
- 7 Miller-Simon CE
- 8 Ackerman Land & Livestock CE
- 9 Bradley CE
- 10 Miller CE
- 11 Eagle's Nest Open Space
- 12 Eagle's Nest CE
- 13 Fonken CE
- 14 Kerbel Farm CE
- 15 Bee Farm CE
- 16 Weber Farm CE
- 17 Kraft CE
- 18 Lions' Open Space
- 19 Pleasant Valley Trail
- 20 Soderberg Open Space
- 21 Horsetooth Mountain Open Space
- 22 Cathy Fromme Prairie Natural Area
- 23 Spring Canyon Covenants
- 24 Rim Rock CE
- 25 Siefke CE
- 26 Coyote Ridge Natural Area
- 27 Rimrock Open Space
- 28 Prairie Ridge Natural Area
- 29 Long View Farm Open Space
- 30 Fossil Creek-Everitt North CE
- 31 Fossil Creek Reservoir Regional Open Space
- 32 Fossil Creek-Everitt South CE
- 33 Fossil Creek-Dickinson CE
- 34 River Bluffs Open Space
- 35 Boyd Lake State Park Addition
- 36 Sylvan Dale Ranch CE
- 37 Indian Creek CE
- 38 Devil's Backbone Open Space
- 39 Kauffman CE
- 40 Knoll-Willows Open Space
- 41 American Legion Open Space
- 42 Hermit Park Open Space
- 43 Meadowdale CE
- 44 Homer Rouse Trail
- 45 Lily Lake Water & Recreation Rights
- 46 Lily Lake (Roessler)
- 47 Childers/Henning CE
- 48 Mills/Kiley CE
- 49 Cohen CE
- 50 Smitherman Ranch CE
- 51 Ramsay-Shockey Open Space
- 52 Blue Mountain Bison Ranch CE
- 53 Chimney Hollow Open Space
- 54 Harper CE
- 55 Ryan's Gulch CE
- 56 Red-tail Ridge Open Space

- Open Space (OS) Managed by Larimer Co.
- Other Open Space
- Conservation Easements (CE)
- ◆ Project Currently Open to the Public



Inventory of Open Lands Acquisitions

Name	Acreege	Acquisition Value	Larimer Co. Open Lands	Donation/Bargain Sale	Partnerships	Public Access	Comments
Laramie Foothills							
Red Mountain Open Space	13,448	9,700,800	1,846,400		GOCO 7,854,400	Yes	FC hold GOCO CE
Red Mountain Open Space	1480	4,000,000	2,689,000		TNC/FC 1,311,000	Yes	Red Mountain Trailhead
Eagle's Nest Open Space	755/*72	2,054,500	1,360,000	54,500	3 Partners 640,000	Yes	LLT holds covenants
Teepee Rings CE	*504	170,000	69,000	100,000	LLT 1,000	No	Monitored by LLT
Roberts Ranch CE Phase I	*4,960	3,000,000	200,000	109,000	3 Partners 2,691,000	No	Monitored by TNC
Ackerman CEs I & II, L&L Co. I	*885	934,000	490,774	167,000	NRCS/FRPP 276,226	No	Monitored by Larimer Co.
Buckeye/Waverly Ag Lands							
Buckeye CE	*494	197,853	28,000		TNC/LLT 169,853	No	Monitored by LLT
Buckeye CE 3 & 4	*70	190,000	60,000	130,000		No	Monitored by Larimer Co.
Bradley CE	*184	95,000		95,000		No	Monitored by Larimer Co.
Bradley CE II	*283	200,000	31,975	25,000	GOCO 143,025	No	Monitored by Larimer Co.
Miller CE	*90	50,000		50,000	GOCO	No	Monitored by Larimer Co.
Miller-Simon-Bokovy	*70	70,000	4,438	65,562		No	Monitored by Larimer Co.
Wellington Ag Lands							
Kerbel Farm CE	*83	197,498	98,749		Fort Collins 98,749	No	Monitored by Larimer Co.
Bee Farm CE	*139	365,302	182,651		Fort Collins 182,651	No	Monitored by Larimer Co.
Weber Farm CE	*69.1	198,138	99,069		Fort Collins 99,069	No	Monitored by Larimer Co.
Kraft Farm CE	*130	460,000	460,000			No	Monitored by Larimer Co.
Poudre River							
Fonken CE Phases 1-5	*245	650,000		650,000		No	Five donations completed
Lions' Open Space	20					Yes	20-acre, 25 year lease
River Bluffs Open Space	161	1,920,000	720,000		GOCO 1,200,000	Yes 2010	Greeley holds GOCO CE
Fort Collins/Loveland Separator							
Long View Farm Open Space	599.4	3,027,000	1,594,500		3 Partners 1,432,500	Future Trail	Leased for dryland farming
Cathy Fromme Prairie Natural Area	240	1,000,000	180,000		2 Partners 820,000	Yes	Managed by Fort Collins
Prairie Ridge Natural Area	792	3,139,000	437,881		3 Partners 2,701,119	Future Trail	Managed by Loveland
Fossil Creek Reservoir Open Space	843.5	7,988,750	3,744,550	19,650	Fort Collins 4,224,550	Yes	Transfer to FC in 2010
Coyote Ridge Natural Area	839.3	1,885,500	523,583	21,500	Fort Collins 1,340,417	Yes	Managed by Fort Collins
Boyd Lake State Park Addition	30	405,000	90,000		5 Partners 315,000	Yes	Managed by State Parks
Devil's Backbone to Horsetooth							
Horsetooth Mountain Open Space	***1,975					Yes	Transferred to Open Lands in 2008
Rimrock Open Space	472/*274	2,362,240	2,262,240		Fort Collins 100,000	Yes	Monitored by Larimer Co.
Siefke CE	*35	93,000		93,000		No	Monitored by Larimer Co.
Soderberg Open Space (HTMOS)	114	460,000	460,000			Yes	Managed as part of HTMOS
Russ Crowder Area (DBBOS)	11.8	100,000		100,000		Yes	Managed by Larimer Co.
Devil's Backbone Open Space	2,197/*11.3	9,365,020	2,581,920		4 Partners 6,783,100	Yes	Monitored by Larimer Co.
Hughey Open Space (HTMOS)	282	310,000	129,000	31,000	GOCO 150,000	Yes	Managed as part of HTMOS
Culver Open Space (HTMOS)	287.9	1,500,000	975,000		FC/GOCO 525,000	No	FC holds GOCO CE
Big Thompson River							
Sylvan Dale CE	*1160.7	2,622,676	922,436	1,325,240	Loveland/GOCO 375,000	Potential	Monitored by Larimer Co.
Block CE	*35	200,000	100,000	100,000	2 Partners	No	Monitored by Larimer Co.
Kauffman CE	*73.55	800,000		800,000		Future Trail	Monitored by Larimer Co.
Berthoud/Loveland Separator							
Ryan Gulch CE	*438	2,027,844	290,900	381,000	4 Partners 1,355,944	Future Trail	Monitored by Loveland
Blue Mountain							
Ramsay-Shockey Open Space	177	325,000		325,000		Yes	Adj. to Pinewood Reservoir
Blue Mountain Bison Ranch CE	*4,100	2,666,000	1,350,000	666,000	GOCO 650,000	Guided Tours	Monitored by LLT & LC
Chimney Hollow Open Space	1,847	3,842,000	2,892,000		GOCO 950,000	2015	Loveland holds GOCO CE
Harper CE	*240	295,000		295,000		No	Monitored by LLT
Little Thompson River							
Red-tail Ridge Open Space	320	951,559	286,559		4 Partners 665,000	Future Trail	Monitored by LLT
Red-tail Ridge Trailhead/Trail	**	43,699		43,699		Future Trail	15.1 ac. trail & trailhead
Estes Valley							
Childers/Henning CE	*160	800,000		752,000	Private 48,000	No	Monitored by EVLT
Hermit Park Open Space	1362	8,700,000	4,000,000	2,200,000	7+ Partners 2,500,000	Yes	Monitored by EVLT
Cohen CE	*131	1,350,000	75,000	850,000	4 Partners 425,000	No	Monitored by EVLT
Smitherman CE	*520	520,000	130,000		EVLT/GOCO 390,000	No	Monitored by EVLT
Homer Rouse Memorial Trail	**	40,000	10,000		Estes Park 30,000	Yes	Managed by EVRPD
Lake Estes Trail	**	232,500	100,000		4 Partners 132,500	Yes	Managed by EVRPD
Lion Gulch Trailhead		21,521	10,000		USFS 11,521	Yes	Managed by USFS
Lily Lake/Roessler	18.2	400,000	40,000		3 Partners 360,000	No	Managed by RMNP
Lily Lake Water & Rec. Rights		551,000	45,000	236,000	6 Partners 270,000	Yes	Managed by RMNP
Enos-Kiley CE	*192	335,000	45,000		EVLT/Estes Park 290,000	Limited	Monitored by EVLT
Knoll-Willows Open Space	20	210,000	50,000		EVLT/Estes Park 160,000	Yes	Monitored by EVLT
American Legion Open Space	1.6	200,000	25,000	125,000	EVLT/Estes Park 50,000	Limited	Monitored by EVLT
Fee Simple Acreage Total	28,294						
CE Acreage Total	16,001						
Fee Simple & CE Acreage Total	44,295	83,222,400	31,690,625	9,810,151	41,721,624		

Managed or monitored by Larimer Co.

* Conservation Easement

** Trail Easement

*** Purchased in 1982 by Sales Tax

DBBOS Devil's Backbone Open Space

EPK Estes Park

EVLT Estes Valley Land Trust

EVRPD Estes Valley Rec. & Park Dist.

FC Fort Collins

HTMOS Horsetooth Mountain Open Space

GOCO Great Outdoors Colorado

LC Larimer Co.

NRCS Nat. Res. Conservation Service

LLT Legacy Land Trust

RMNP Rocky Mountain Nat. Park

TNC The Nature Conservancy

USFS U.S. Forest Service

Keeping Communities Connected with the Land

Artist of the Year: Diane Findley

The Open Lands Visual Artist of the Year program

- Connects the natural beauty of Larimer County's Open Spaces with the local art community, and
- Shows the public the connection between art and nature.

Each year the chosen artist creates art inspired by a Larimer County-managed open space. A piece of that artwork is donated to hang in public areas of County facilities. Diane Findley, the 2009 Visual Artist of the Year, painted twelve amazing pieces inspired by sites all over the county. The piece donated to the County is titled "Poudre River" and is on display all year on the second floor of the County Courthouse Offices Building in Fort Collins.



Photo: Charlie Johnson

Public Works Division
Marc Engemoen, Director

Engineering
Fleet
Natural Resources
Road and Bridge
Solid Waste
The Ranch

Senior Tax Work-off Staff

Senior Tax Work-off employees (and staff) enjoy an end-of-season "thank-you" celebration. These Larimer County citizens worked 191 hours in the administrative offices at the Bison Visitor Center. Their help was invaluable. Throughout the department in 2009, Senior Tax Work-off employees worked 822.5 hours.



Photo: George Kral

Free Firewood Program

Firewood from trees cut to complete forest management projects including to control pine beetle and mistletoe at Horsetooth Mountain Open Space was stacked by volunteer and Alternative Sentencing groups. It was available to the public on Free Firewood Collection days, and provided an alternative heating source for many local families.

www.larimer.org/naturalresources/firewood



Photo: Dale Erickson

Education Program

2009 was a banner year for the Education Program with more programs offered and visitors contacted than in any other year to date. The most vital part of the Education Program remains the school field trips, where over 1,000 students from Loveland and Fort Collins get a day of environmental education at the Devil's Backbone Open Space and Horsetooth Mountain Open Space.

www.larimer.org/nreducation



Photo: Rob Novak

"Our open lands add greatly to the wonderful quality of life here in Larimer County and as a parent I am very interested in seeing that continue. Larimer County has made a commitment to preserving open lands and I am honored to serve as liaison to the Open Lands Advisory Board."

Tom Donnelly,
County Commissioner District 3



Department of Natural Resources
1800 S. County Road 31
Loveland, Colorado 80537
970-679-4570



This NewPage paper has been chain-of-custody certified by three independent third party certification systems.